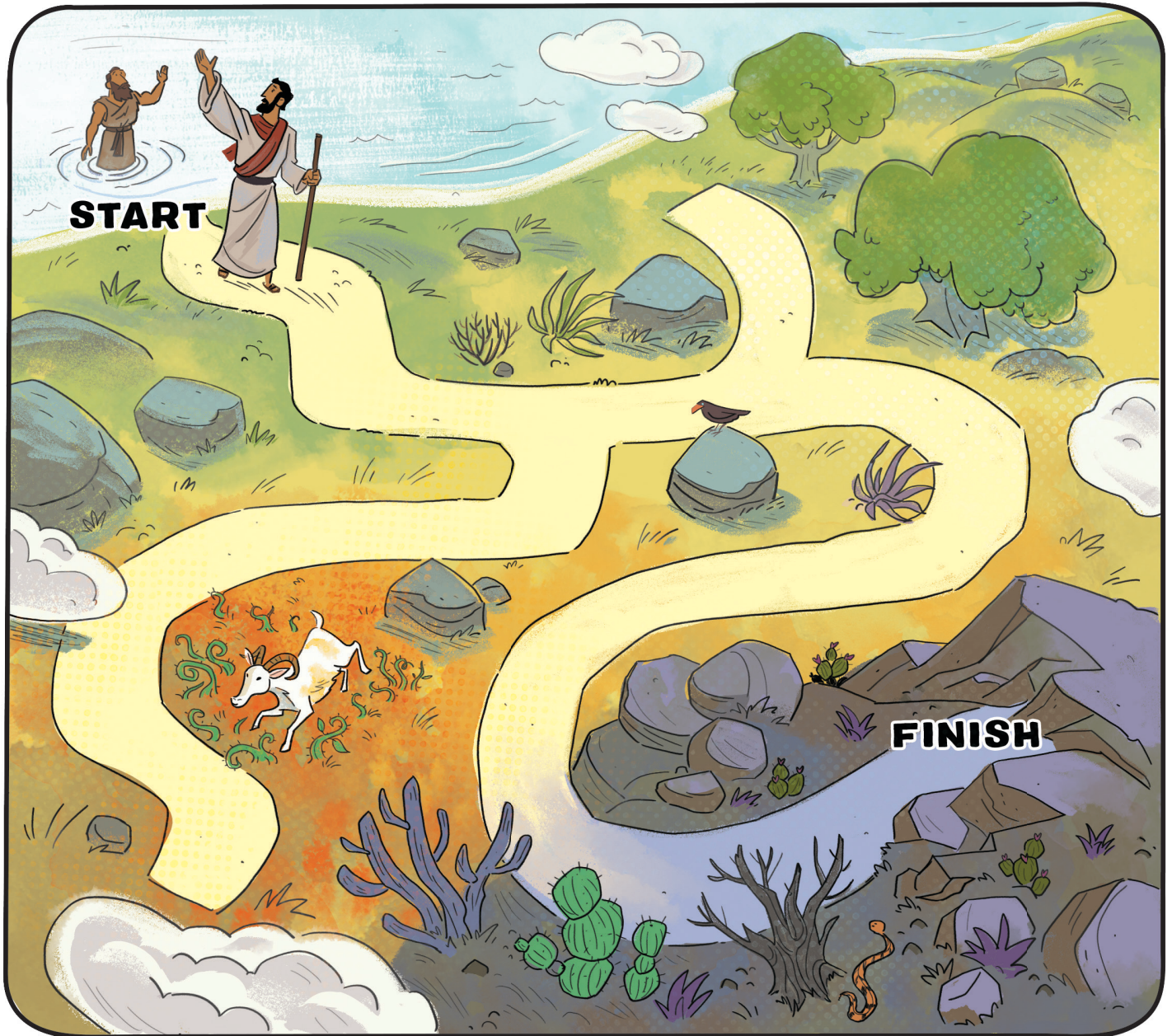


# Into the Wilderness

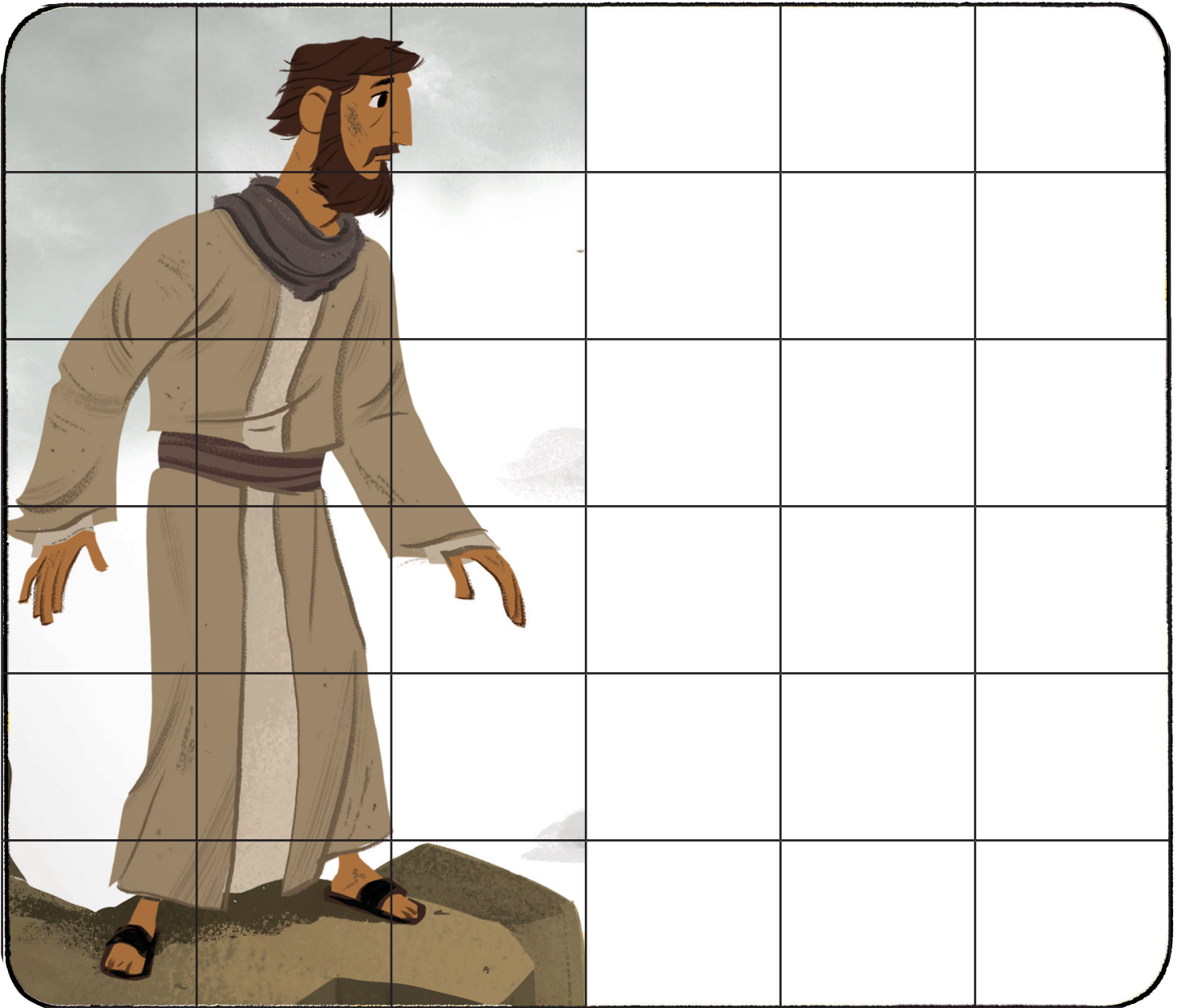
**INSTRUCTIONS:** Complete the maze to lead Jesus into the wilderness.



Recommended Age: Preschool

# Just Like Jesus

**INSTRUCTIONS:** Use the grid to help you draw a picture of Jesus.



**Recommended Age:** Younger Kids



## What Would You Do? | For each scenario, circle how you would respond.

SCENARIO	OPTION A	OPTION B	OPTION C
You left your sister's new crayons in the sun, and they melted.	Offer to buy her new crayons.	Hide the crayons and hope she doesn't notice.	Other: _____
You buy popcorn at a concession stand and get \$1 too much in change.	Give back the extra money.	Pocket the change and walk away quickly.	Other: _____
You see a kid at recess shivering because he doesn't have a coat.	Pretend you don't see him.	Let him borrow your coat.	Other: _____

## Temptation and Reply | Look up the Scripture references to fill in the ways Jesus responded to temptation.

"If you are the Son of God, tell these stones to become bread."

Matthew 4:4

"If you are the Son of God, throw yourself down. For it is written: He will give his angels orders concerning you, and they will support you with their hands so that you will not strike your foot against a stone."

Matthew 4:7

"I will give you all these things if you will fall down and worship me."

Matthew 4:10

